



THE KEY TO YOUR NEXT MOVE

www.keystateagents.com

To Let

Tel: 024 7632 2022



£900 Per Month

335 Croft Road, Stockingford, Nuneaton CV10 7DZ



E-mail: lettings@keystateagents.com

KEY ESTATE AGENTS

Website: www.keystateagents.com

A well presented two bedroom property on Croft Road, Nuneaton, offering plenty of space throughout.

On the ground floor you will find two spacious reception rooms and a modern kitchen with plenty of storage. Outside you will find a generous garden with patio and lawn area.

Upstairs, two good sized double bedrooms and a large family bathroom .

Viewing is strongly advised to appreciate the quality of the property.

Entrance



Enter via a part glazed front door into the lounge.

Lounge 12'1" x 11'3" (3.7 x 3.45)



With bay window to the front aspect.

Dining Room 12'1" x 12'0" (3.7 x 3.67)



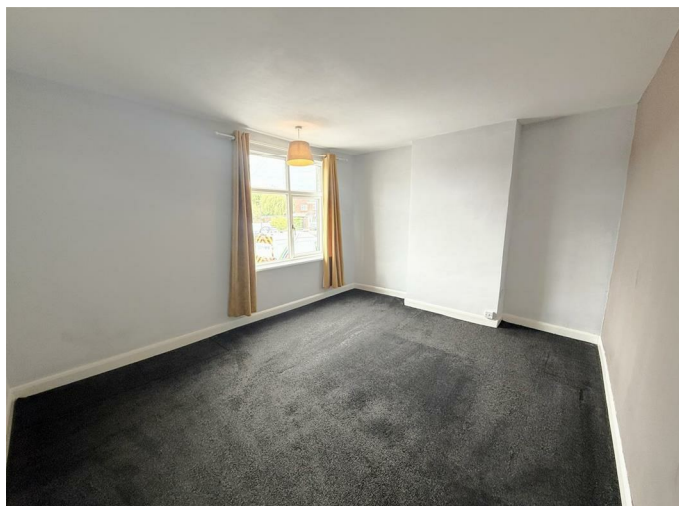
Stairs to first floor, understairs cupboard, window to rear and door to kitchen.

Kitchen 6'0" x 13'1" (1.83 x 4)



Floor mounted kitchen units, built in oven hob and extractor, space for fridge freezer, space for washing machine, window and door to garden.

Master Bedroom 13'11" x 11'5" (4.25 x 3.5)



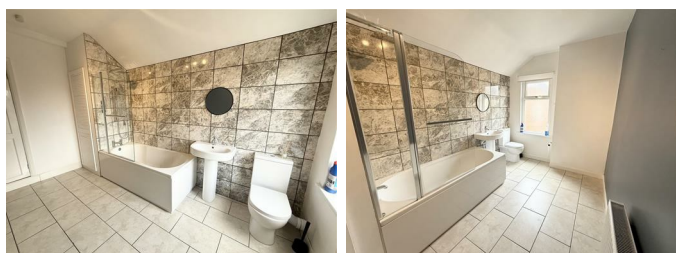
Double bedroom with window to the front aspect.

Second Bedroom 12'2" x 11'1" (3.71 x 3.4)



Double bedroom with window to the rear aspect and built in storage.

Bathroom 12'1" x 7'10" (3.7 x 2.4)



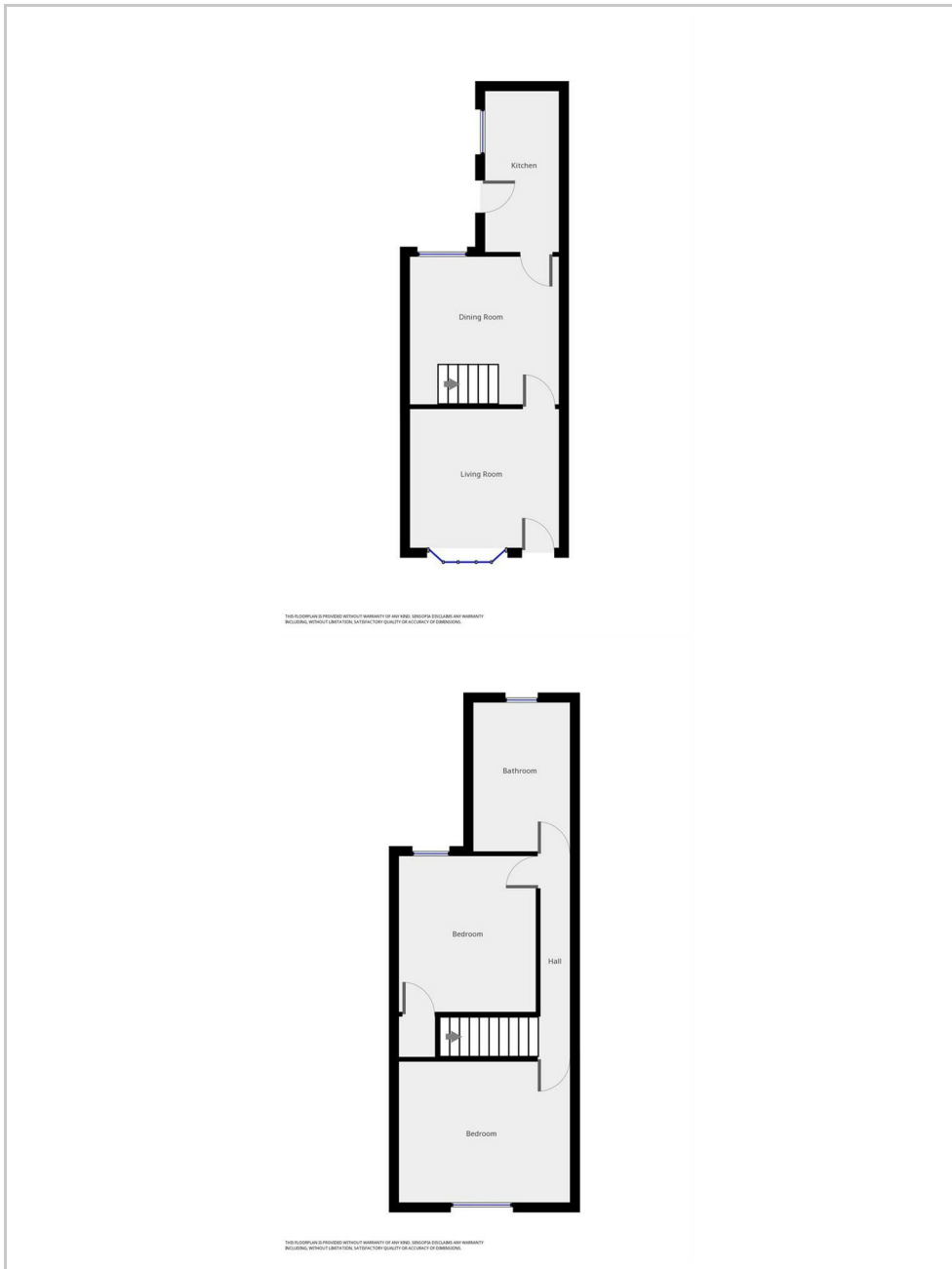
Modern bathroom with a white bathroom suite consisting of a bath with overhead shower, low flush W/C and sink.

Garden

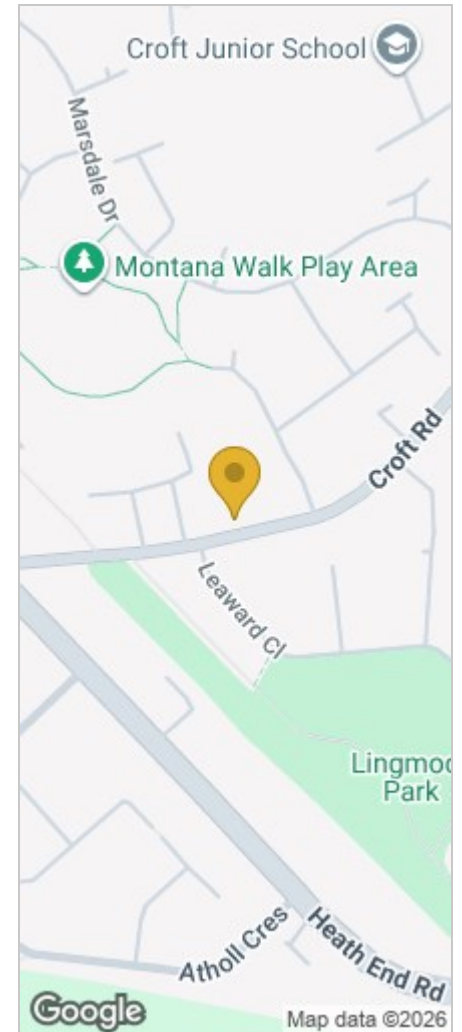


Good sized garden with an area laid to lawn and a patio area, gate leading to alleyway leading to the front of the house

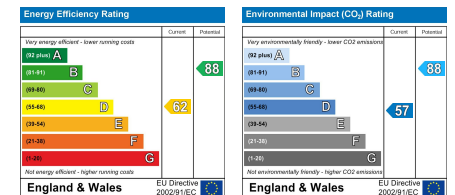
Floor Plan



Area Map



Energy Efficiency Graph



HAVE YOU GOT A PROPERTY TO SELL OR LET?

KEY Estate Agents offer a complete and professional service to Home Owners and Landlords throughout the **Nuneaton, Bedworth** and **Hinckley** and surrounding villages.

If you are thinking of selling or letting your home we would be delighted to offer you a **Free Valuation** with **No Obligation** whatsoever.

Please call us today for details on all of our services, along with information about our competitive fee structure.

KEY Estate Agents

2 The Courtyard, Goldsmith Way, Eliot Business Park, Nuneaton CV10 7RJ

lettings@keystateagents.com



Zoopla.co.uk



rightmove



These particulars do not constitute an offer contract and have been prepared for guidance only, and must not be relied upon as statement of fact.

Area measurements or distances are given as guidance only and are not precise. Boundaries are subject to verification. Appliances and fittings have not been tested. Floor plans are not drawn to scale. The inclusion of any fixtures and fittings are subject to the vendor's confirmation, subject to contract. Internal photographs may well show furnishings, fixtures and fittings which are not included in the sale.



024 7632 2022